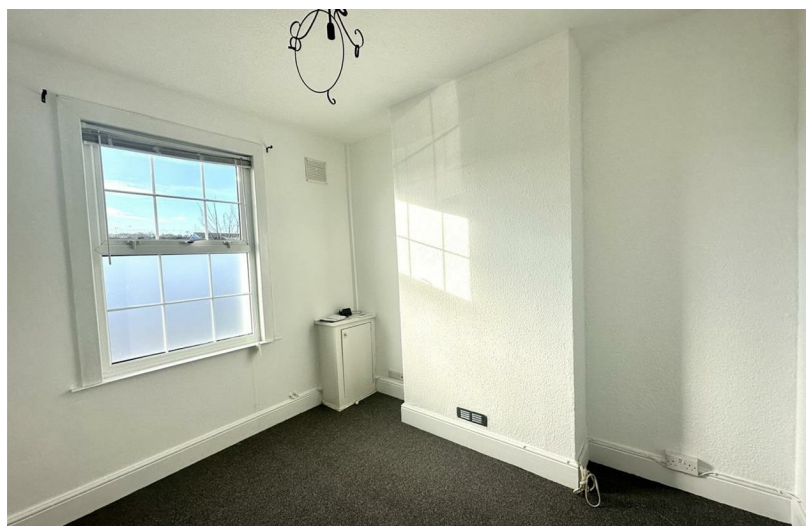


2  
BED

type your text here  
2, Transit Road, Newhaven, BN9 0BB



£1,395 Per Calendar Month

**phillipmann**  
we do more

[www.phillipmann.com](http://www.phillipmann.com)





## inbrief...

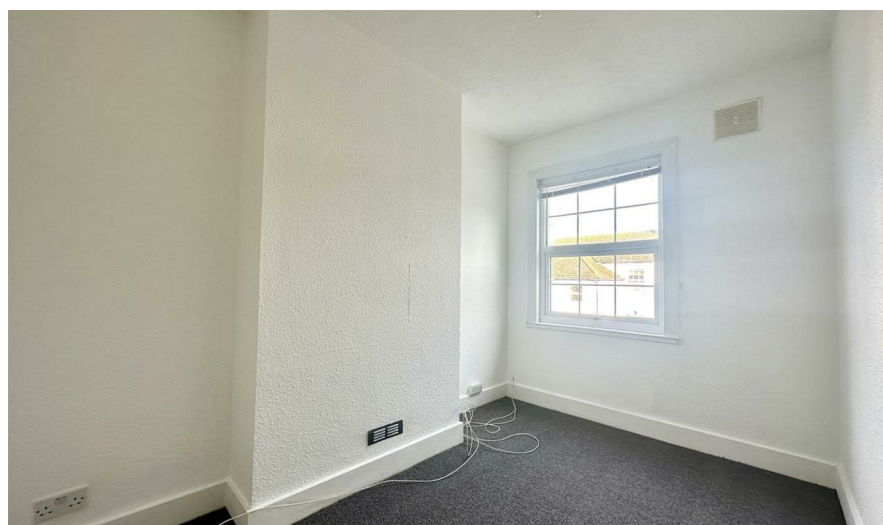
Phillip Mann Lettings are delighted to offer for rent this 2 bedroom Victorian house has been recently decorated throughout and an internal viewing is highly recommended. A part glazed door gives access to the entrance hall where there is laminate and doors to the downstairs accommodation.

The lounge is a good size room with and a window which overlooks the front of the property, separate dining room has a large understairs storage cupboard and a window overlooks the rear garden. The kitchen completes the ground floor which is has a range of wall and base units and incorporates a selection of cupboards and drawers. There is a built in sink unit, oven, hob and space for appliances, door to rear garden.

Stairs rise to the first floor landing, the main bedroom is a good size double and overlooks the front of the property with harbour views. The second bedroom is a further double overlooking the rear garden. Completing the inside is a family bathroom which is fitted with a panelled bath with shower attachment, low level WC and wash hand basin. There is a large cupboard housing a combination boiler and a window to the rear.

Outside there is a low maintenance rear garden with is mainly laid to patio and is enclosed by timber fencing.

Lounge - 11'5 x 10'9  
Dining Room - 11'9 x 10'9  
Kitchen - 9'9 x 7'7  
Bedroom One - 14'2 x 11'1  
Bedroom Two - 12'1 x 7'7



Energy Rating D  
Council Tax Band B

moreinfo...



Phillip Mann Lettings Office  
16 Bridge Street, Newhaven, East Sussex, BN9 9PJ  
01273 517 517

To see more details on this & all our homes go to  
[www.phillipmann.com](http://www.phillipmann.com)